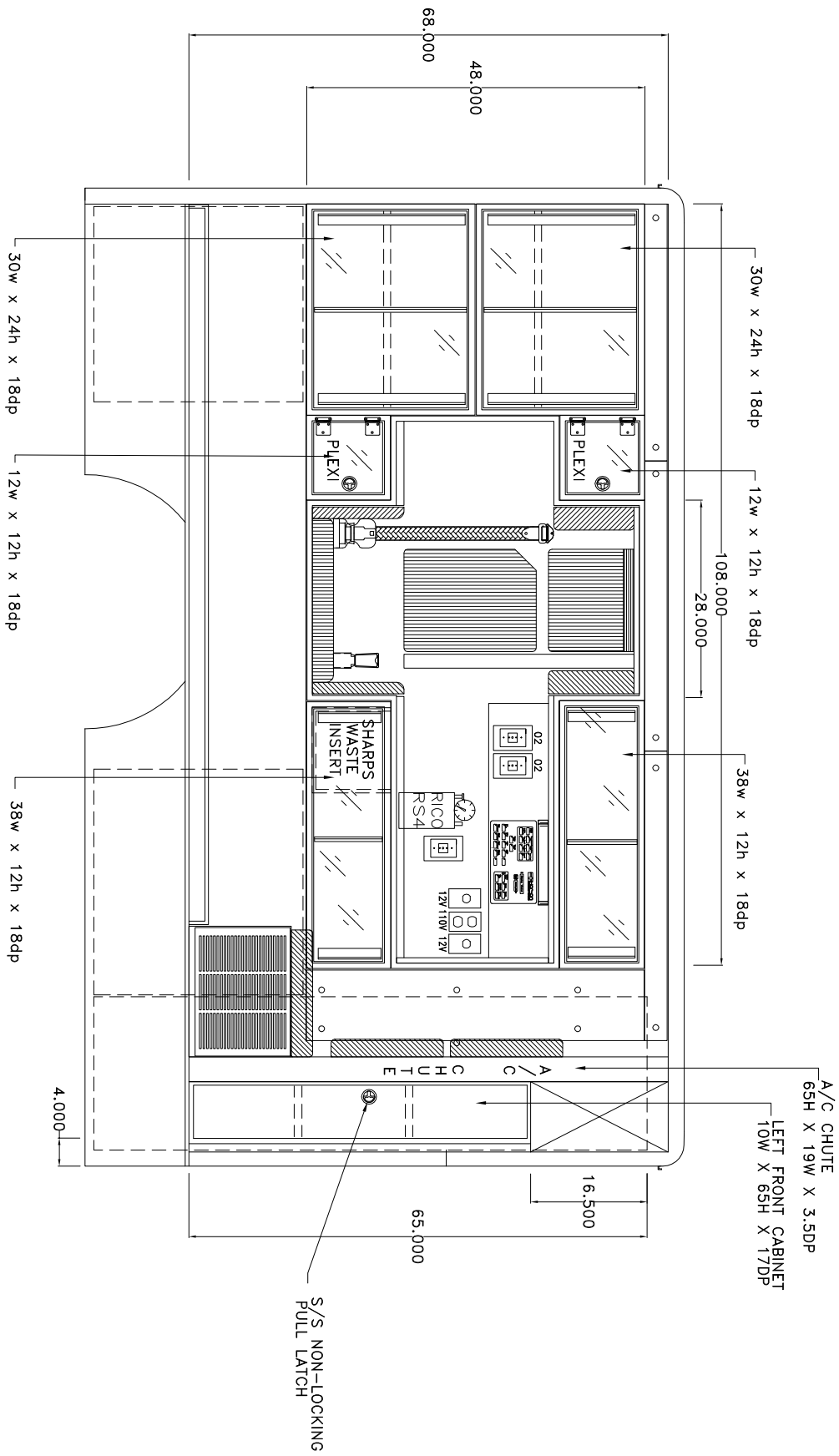


VEHICLE PRODUCTION NUMBER XXXXXX

| REV | DESCRIPTION | DATE | APPROVED |
|-----|---------------------------|---------|----------|
| C | 403-1 CT CMA WITH H.O.P.S | 3/17/09 | |

403-1CT CABINET WALL "B" H.O.P.S INSTALLED



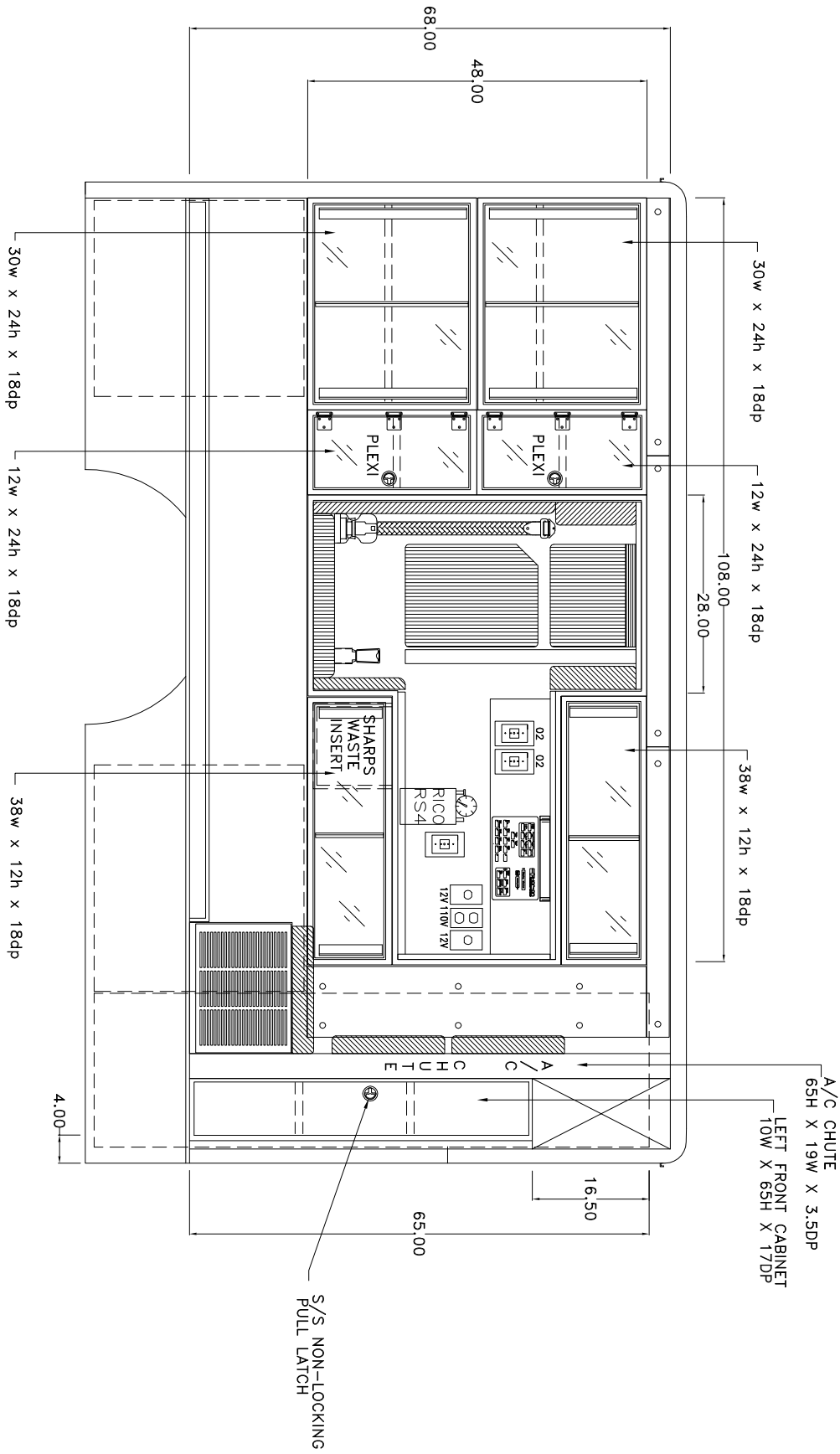
SPECIFICATION DRAWING

VEHICLE PRODUCTION NUMBER XXXXXX

REV C

| REVISIONS | | |
|-----------|--------------------------|---------|
| REV | DESCRIPTION | DATE |
| C | 403-1 CT CABINET H.O.P.S | 3/17/09 |

403-1CT CABINET WALL "D" H.O.P.S INSTALLED



SPECIFICATION DRAWING

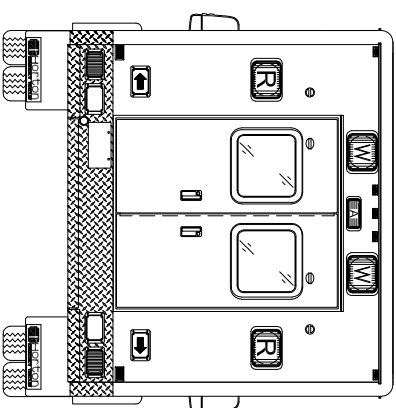
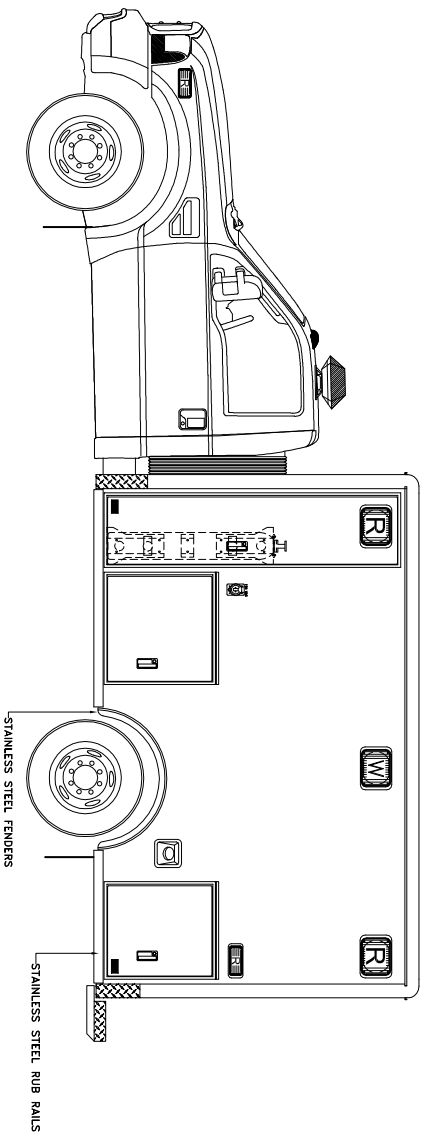
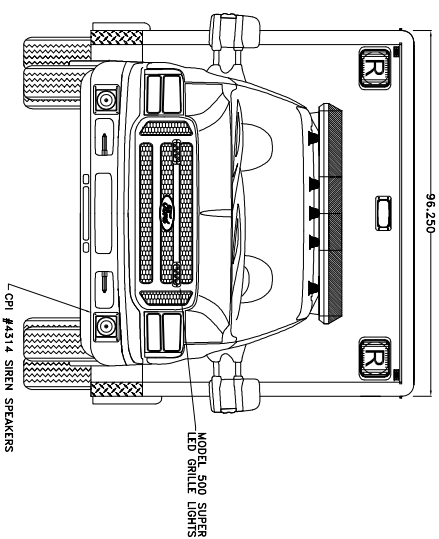
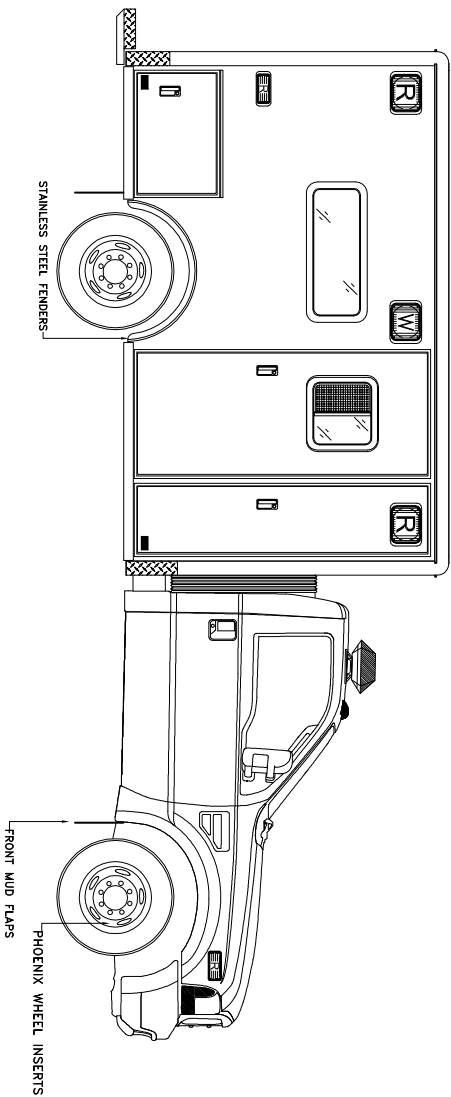
VEHICLE PRODUCTION NUMBER XXXXXX

REV C

REV C

| REV | DESCRIPTION | DATE | APPROVED |
|-----|-------------------|--------|----------|
| C | 403-1 CT EXTERIOR | 3/7/09 | |

403-1 CT EXTERIOR
F-SERIES CHASSIS



DRAWING DEPICTS LIGHTBAR OPTION

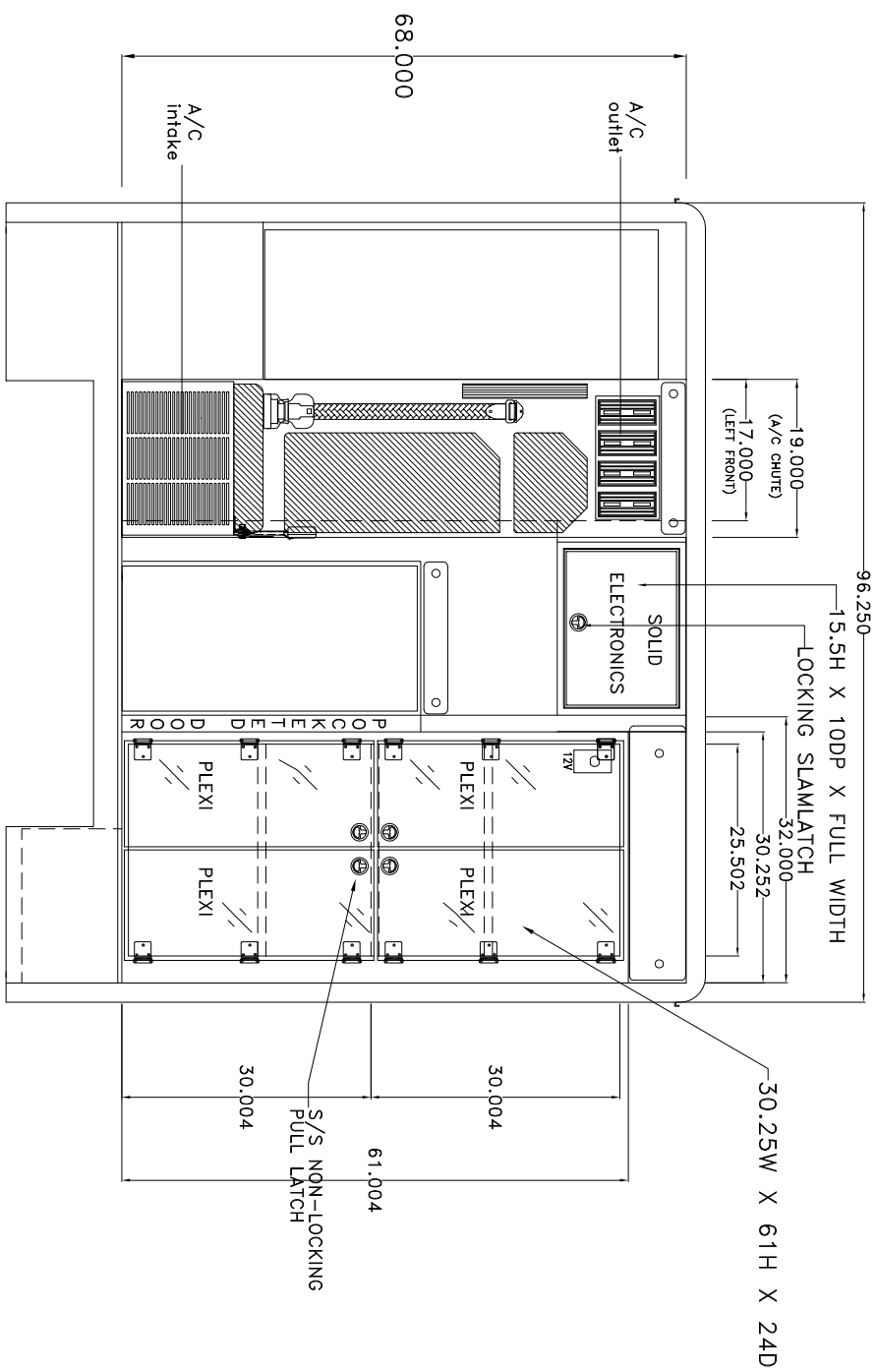
SPECIFICATION

DRAWING

| REV | DESCRIPTION | DATE | APPROVED |
|-----|--------------------------------------|------|----------|
| C | 403-1 CT FW H.O.P.S INSTALLED 5/7/99 | | |

403-1CT FRONT WALL

H.O.P.S INSTALLED



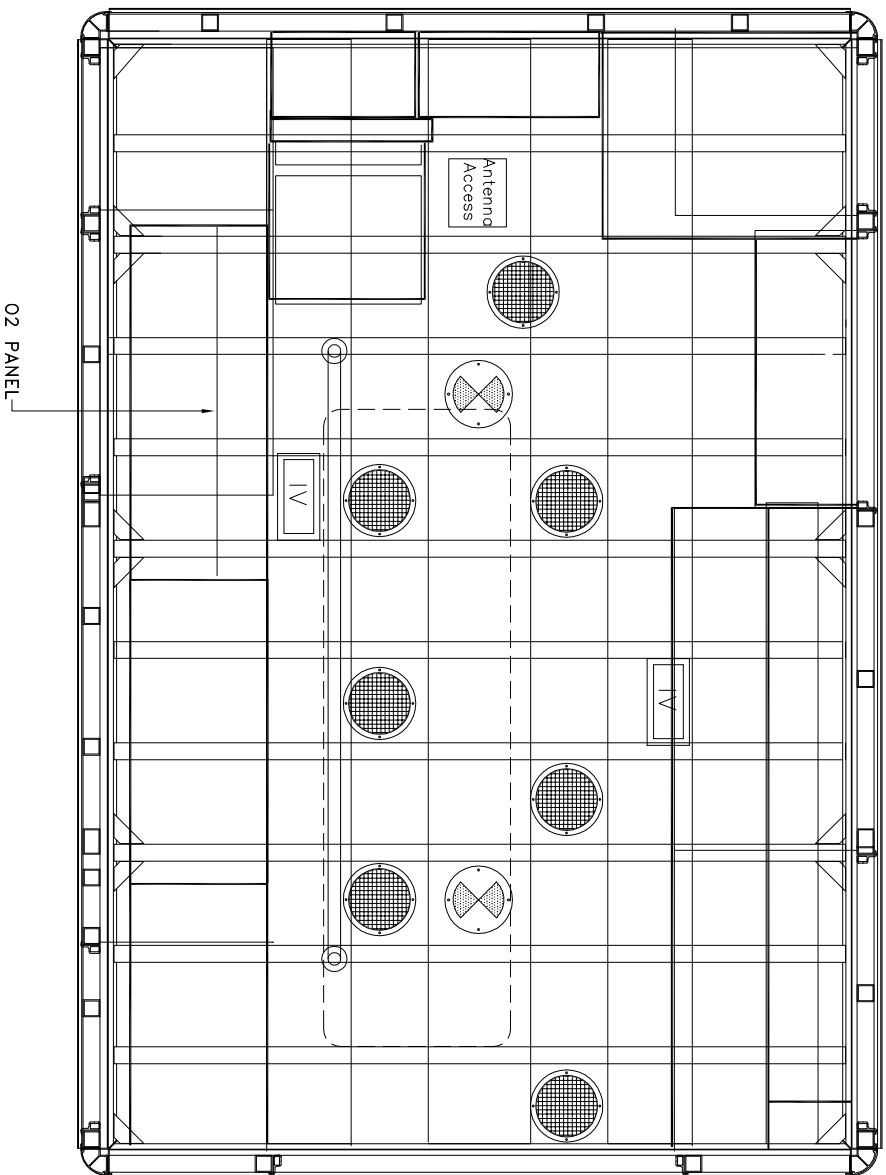
VEHICLE PRODUCTION NUMBER

XXXX

REV
C

| REVISIONS | | |
|-----------|-------------|---------|
| REV | DESCRIPTION | DATE |
| 403-1 | CT 01A | 3/17/09 |
| | | |
| | | |
| | | |
| | | |

403-1CT OVERHEAD WITHOUT CPR SEAT



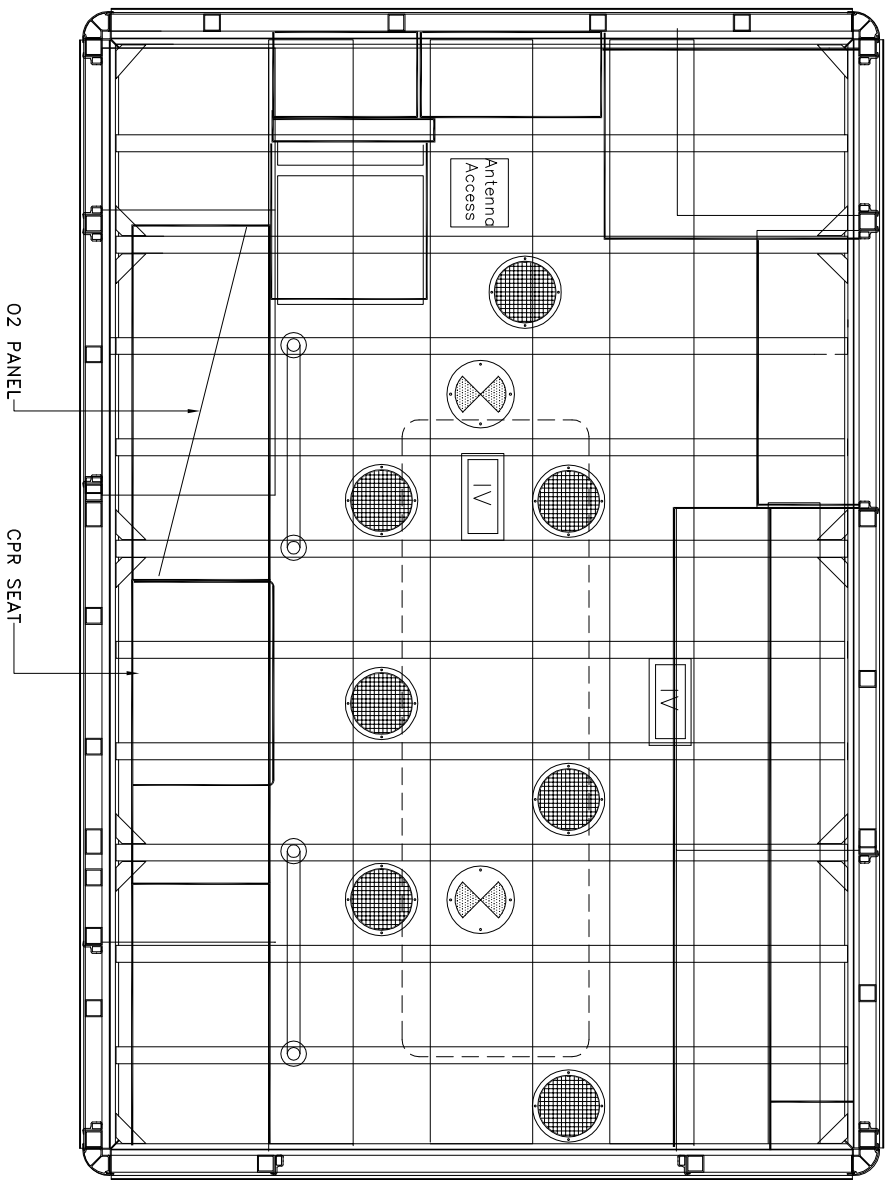
SPECIFICATION DRAWING

VEHICLE PRODUCTION NUMBER XXXXXX

REV C

| REVISIONS | | |
|-----------|-------------|---------|
| REV | DESCRIPTION | DATE |
| 403-1 | CT 00B | 3/17/09 |
| | | |
| | | |
| | | |
| | | |
| | | |

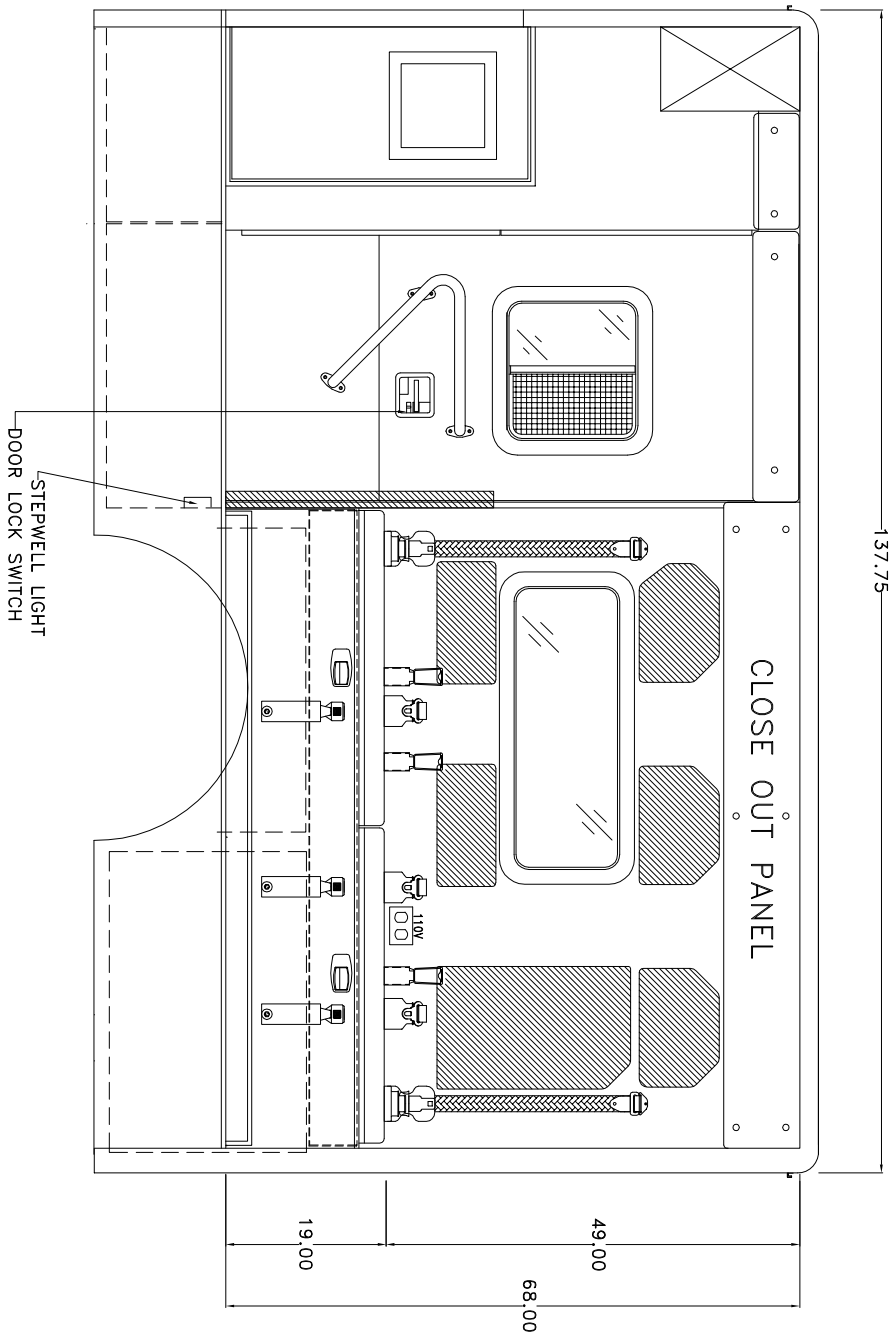
403-1CT OVERHEAD WITH CPR SEAT



SPECIFICATION DRAWING

| REVISIONS | | |
|-----------|--------------------|---------|
| REV | DESCRIPTION | DATE |
| 403-1 | CT SW WITH H.O.P.S | 3/17/09 |
| | | |
| | | |
| | | |

403-1 CT SIDE WALL
H.O.P.S INSTALLED



SPECIFICATION DRAWING

| REVISIONS | | | |
|-----------|--------------|---------|----------|
| REV | DESCRIPTION | DATE | APPROVED |
| C | 403-1 CT CWA | 3/17/09 | |
| | | | |
| | | | |

403-1 CT CABINET WALL "A"

