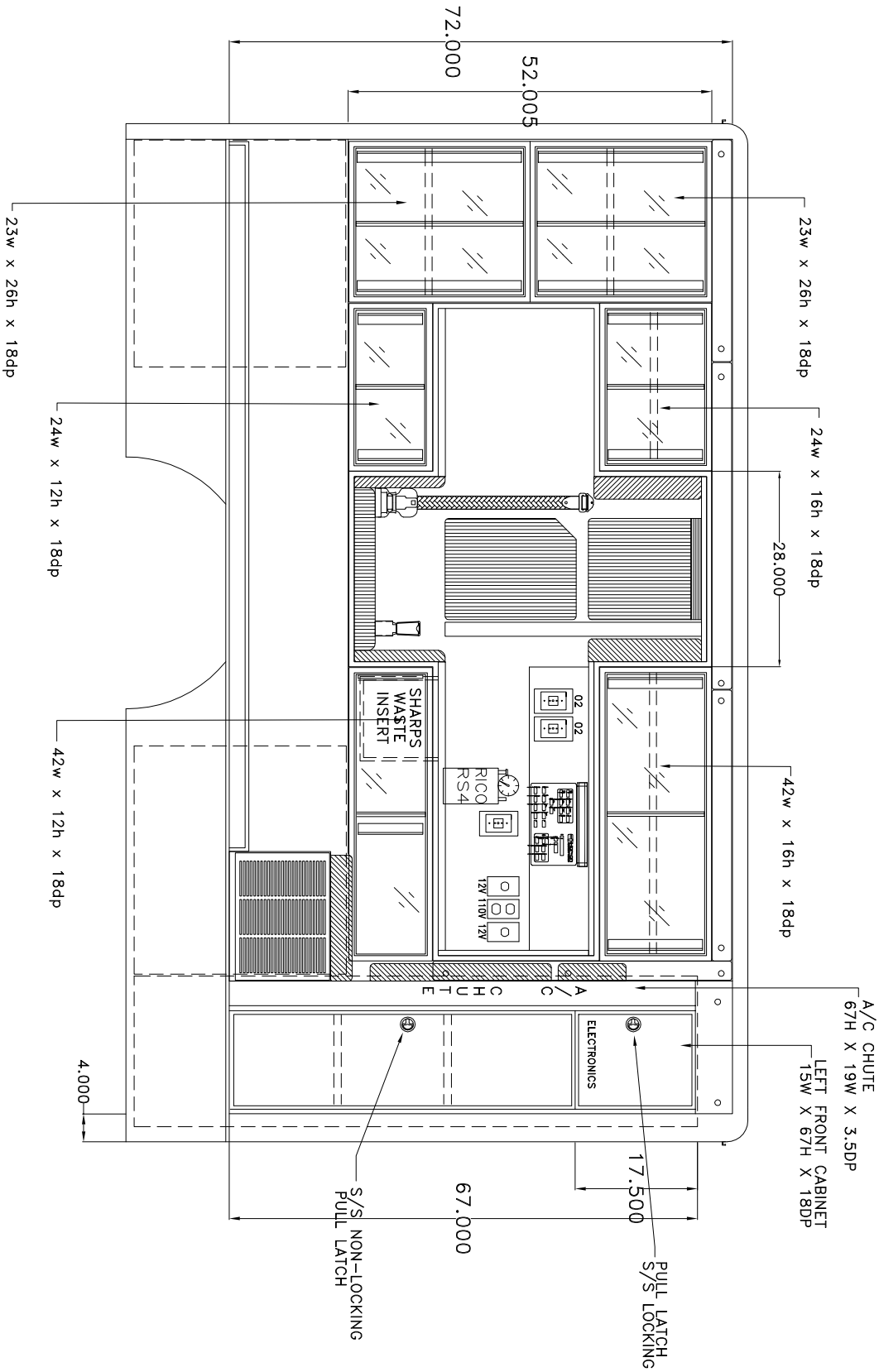


| REV | DESCRIPTION | DATE | APPROVED |
|-------|-----------------|---------|----------|
| 453-3 | GM WITH H.O.P.S | 3/15/09 | |

453-3 CABINET WALL "B"
 E-350 CHASSIS
 H.O.P.S INSTALLED

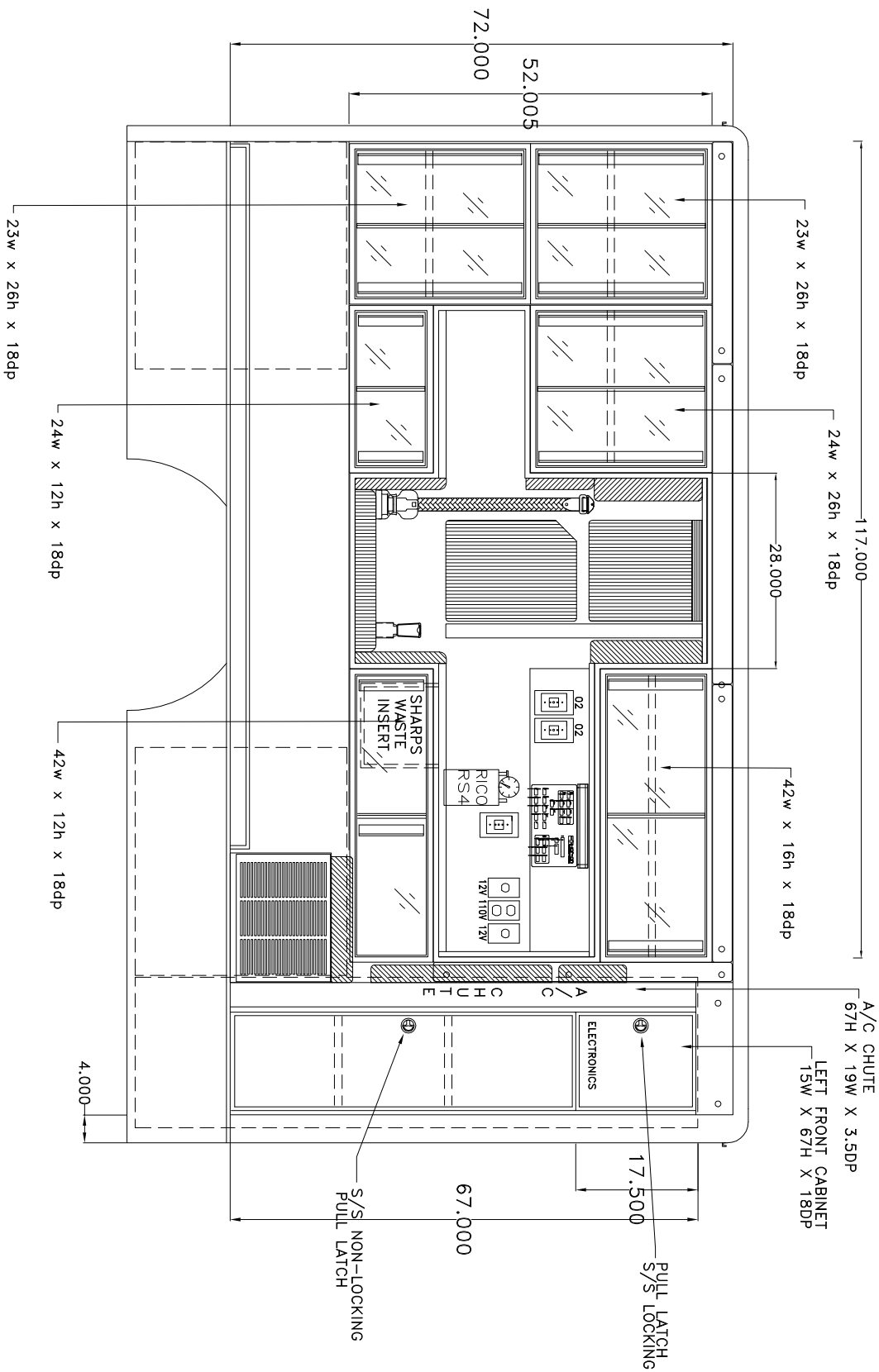


VEHICLE PRODUCTION NUMBER XXXXXX

REV C

| REV | DESCRIPTION | DATE | APPROVED |
|-------|------------------|---------|----------|
| 453-3 | GMC WITH H.O.P.S | 3/19/09 | |

453-3 CABINET WALL "C" E-350 CHASSIS H.O.P.S INSTALLED



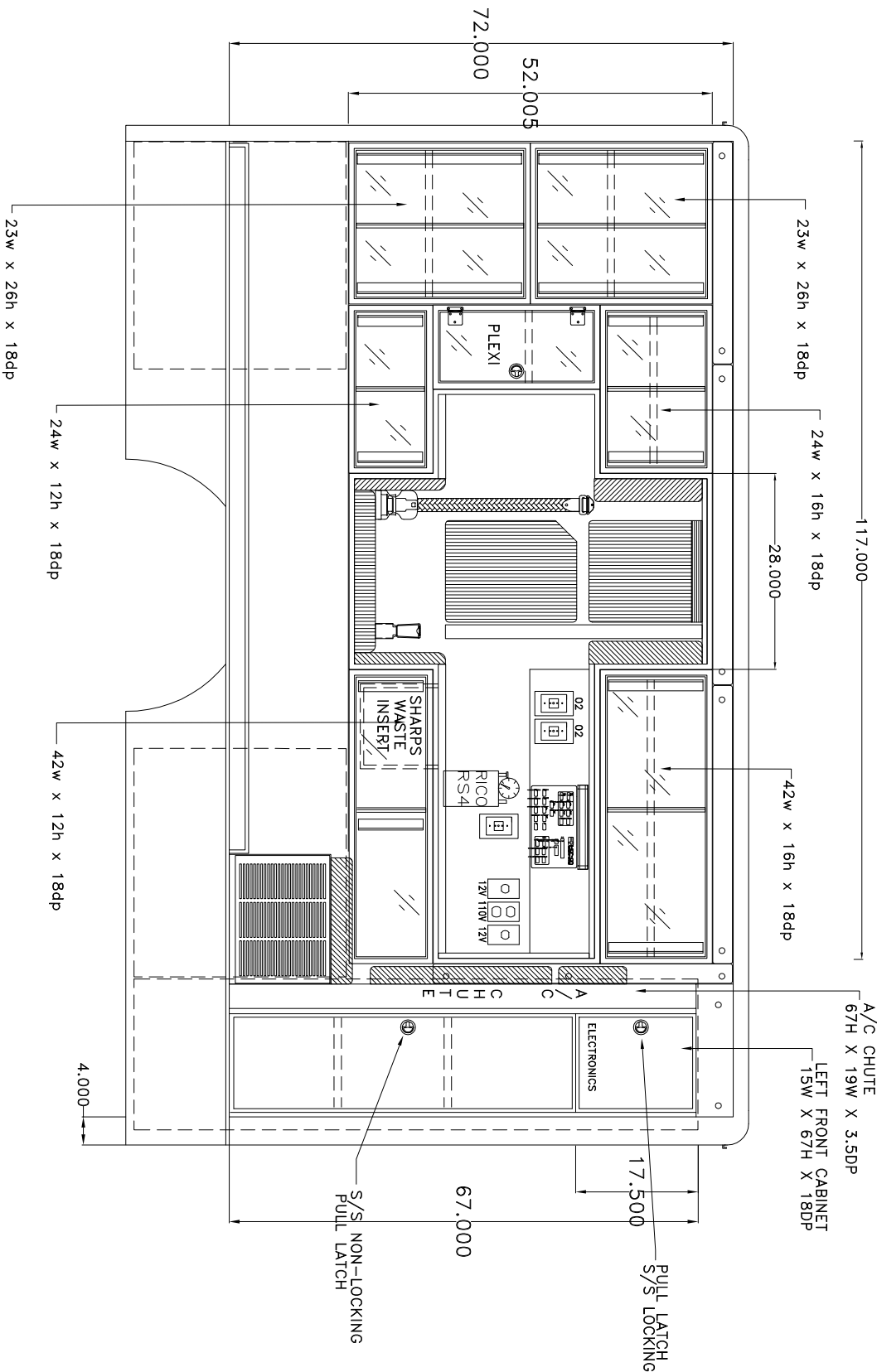
SPECIFICATION DRAWING

VEHICLE PRODUCTION NUMBER XXXXXX

REV C

| REV | DESCRIPTION | DATE | APPROVED |
|-------|-----------------|---------|----------|
| 453-3 | GM WITH H.O.P.S | 3/19/09 | |

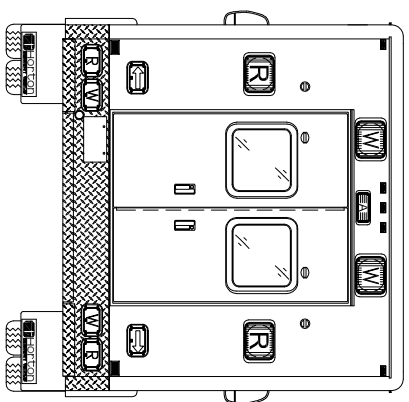
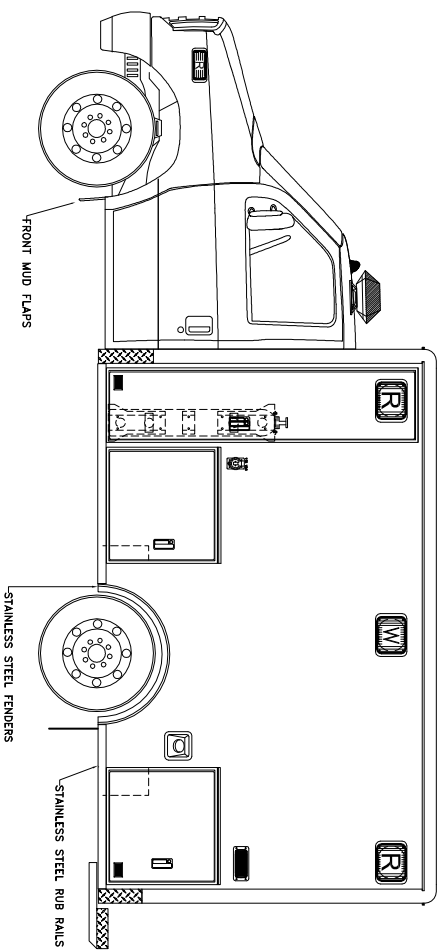
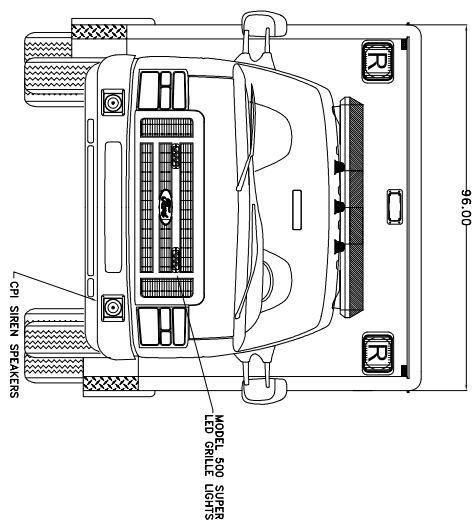
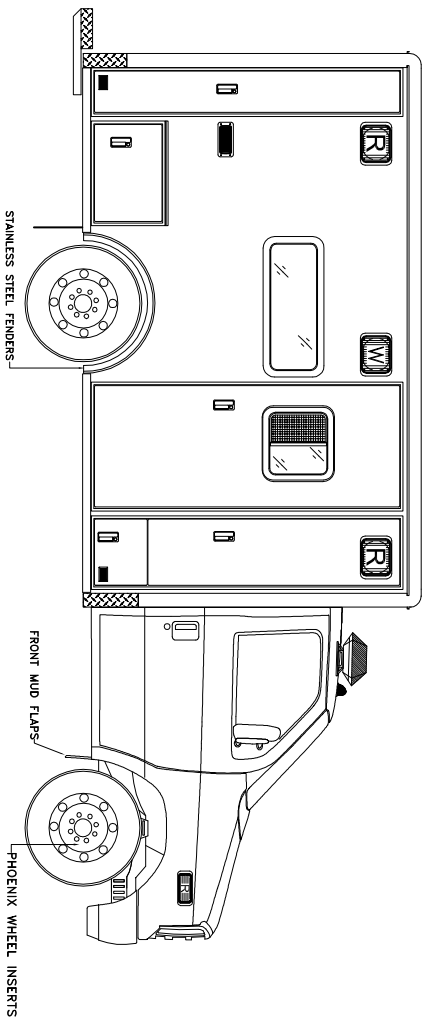
453-3 CABINET WALL "F"
 E-350 CHASSIS
 H.O.P.S INSTALLED



SPECIFICATION DRAWING

| REVISIONS | | |
|-----------|-------------|---------|
| REV | DESCRIPTION | DATE |
| | 453-3 EX | 3/10/09 |
| | | |
| | | |
| | | |

453-3 EXTERIOR
E-350 CHASSIS



DRAWING DEPICTS LIGHTBAR OPTION

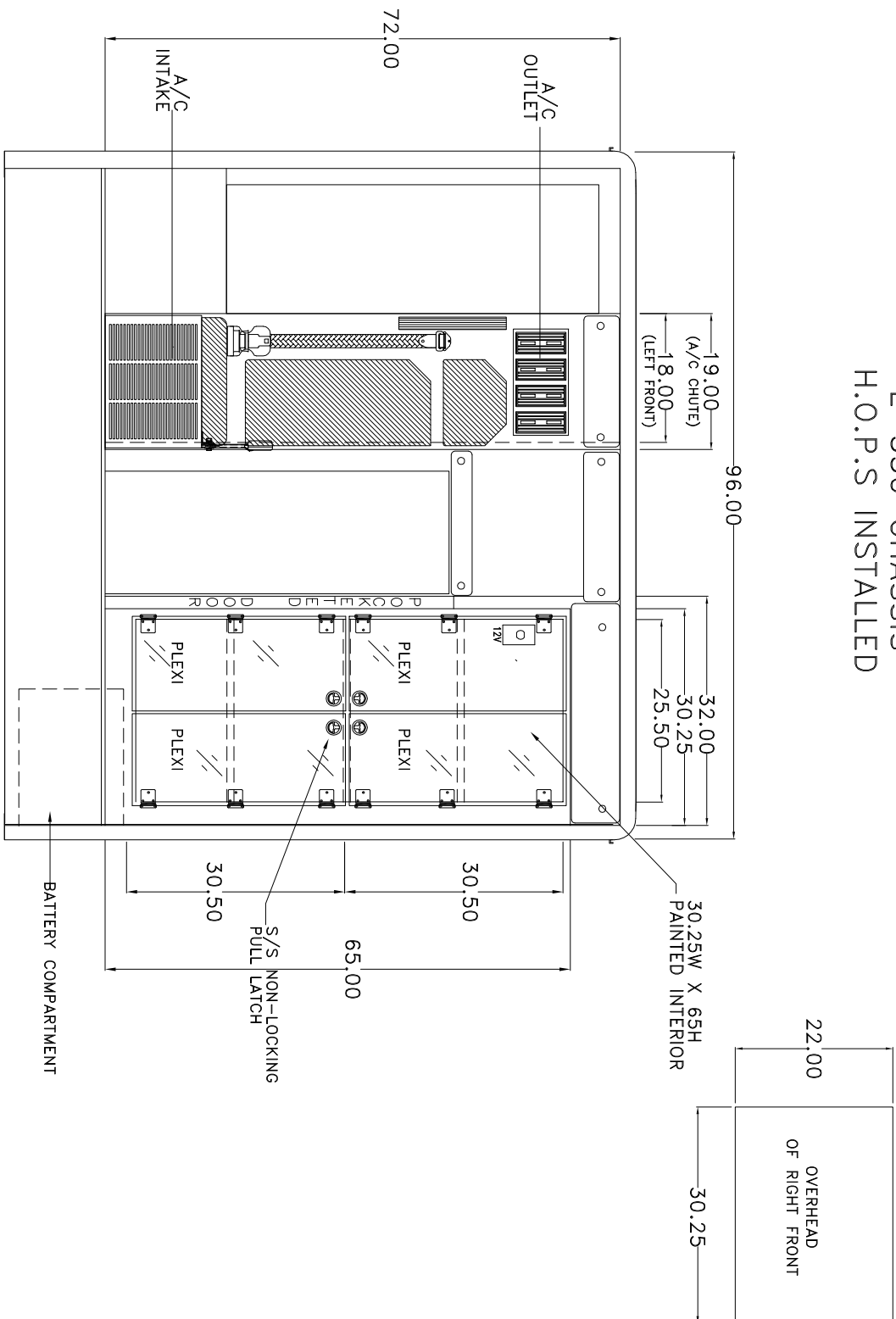
SPECIFICATION DRAWING

VEHICLE PRODUCTION NUMBER XXXXXX

REV C

| REV | DESCRIPTION | DATE | APPROVED |
|-------|-----------------|---------|----------|
| 453-3 | FW WITH H.O.P.S | 3/19/09 | |

453-3 FRONT WALL
E-350 CHASSIS
H.O.P.S INSTALLED



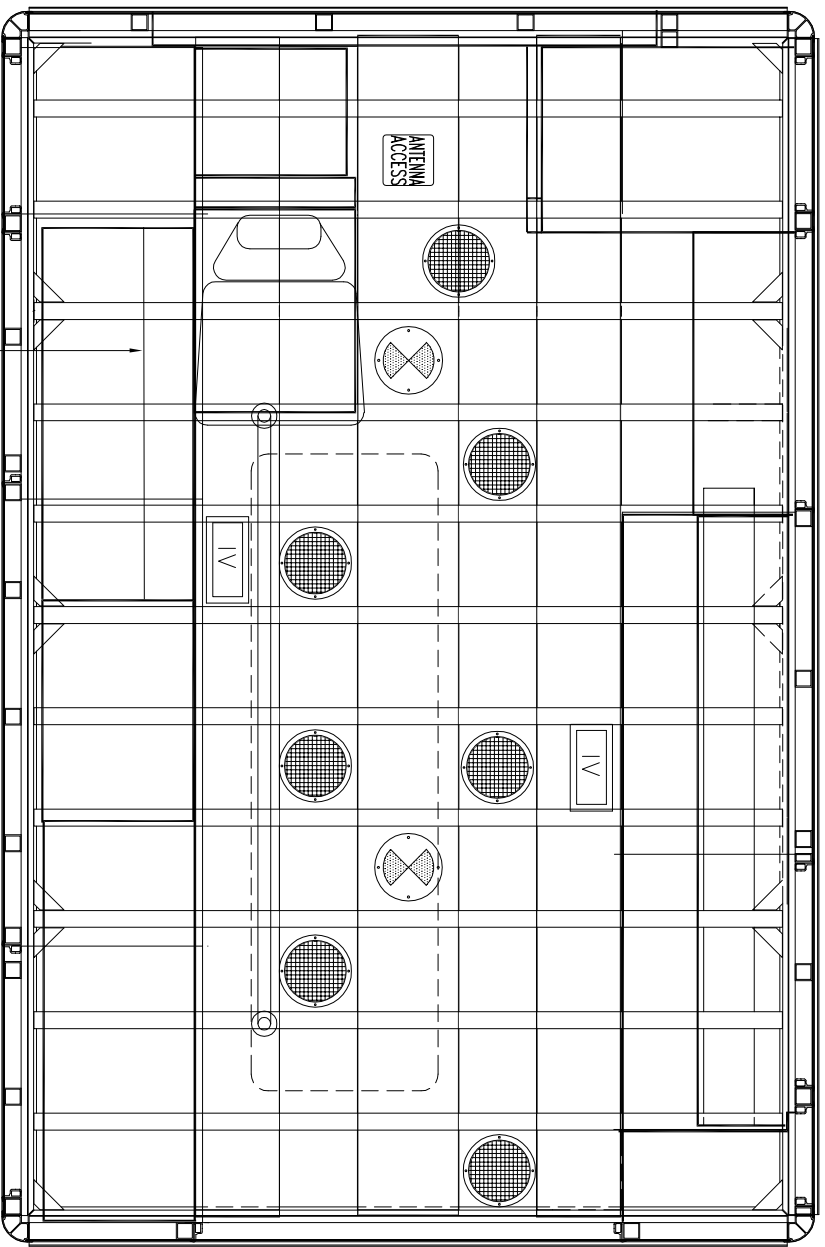
SPECIFICATION DRAWING

VEHICLE PRODUCTION NUMBER XXXXXX

REV C

| REV | DESCRIPTION | DATE | APPROVED |
|-----|-------------|------|----------|
| | | | |
| | | | |
| | | | |
| | | | |

453-3 OVERHEAD WITHOUT CPR SEAT
E-350 CHASSIS



02 PANEL

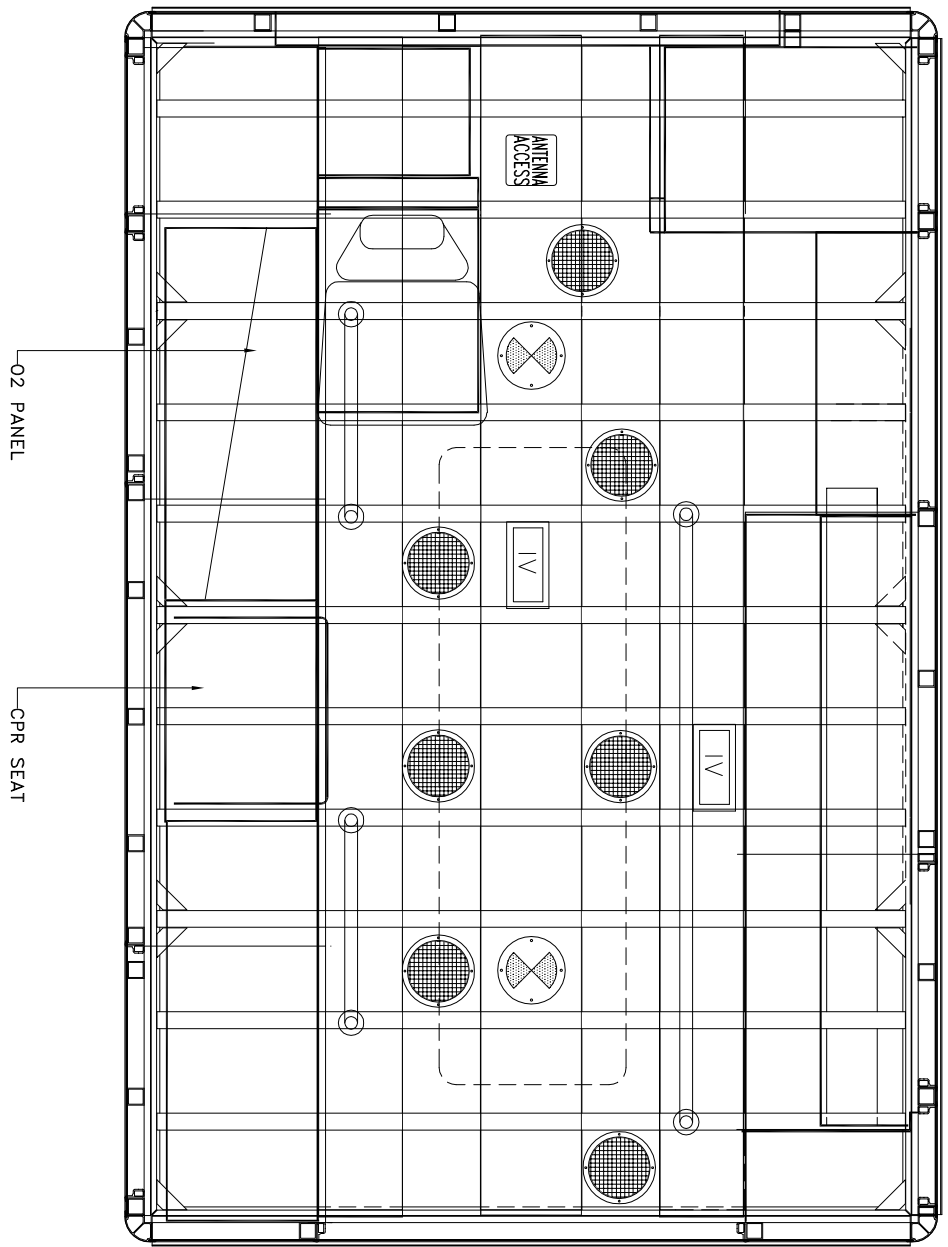
SPECIFICATION DRAWING

VEHICLE PRODUCTION NUMBER XXXXXX

REV C

| REV | DESCRIPTION | DATE | APPROVED |
|-----|-------------|------|----------|
| | | | |
| | | | |
| | | | |
| | | | |

453-3 OVERHEAD WITH CPR SEAT
E-350 CHASSIS



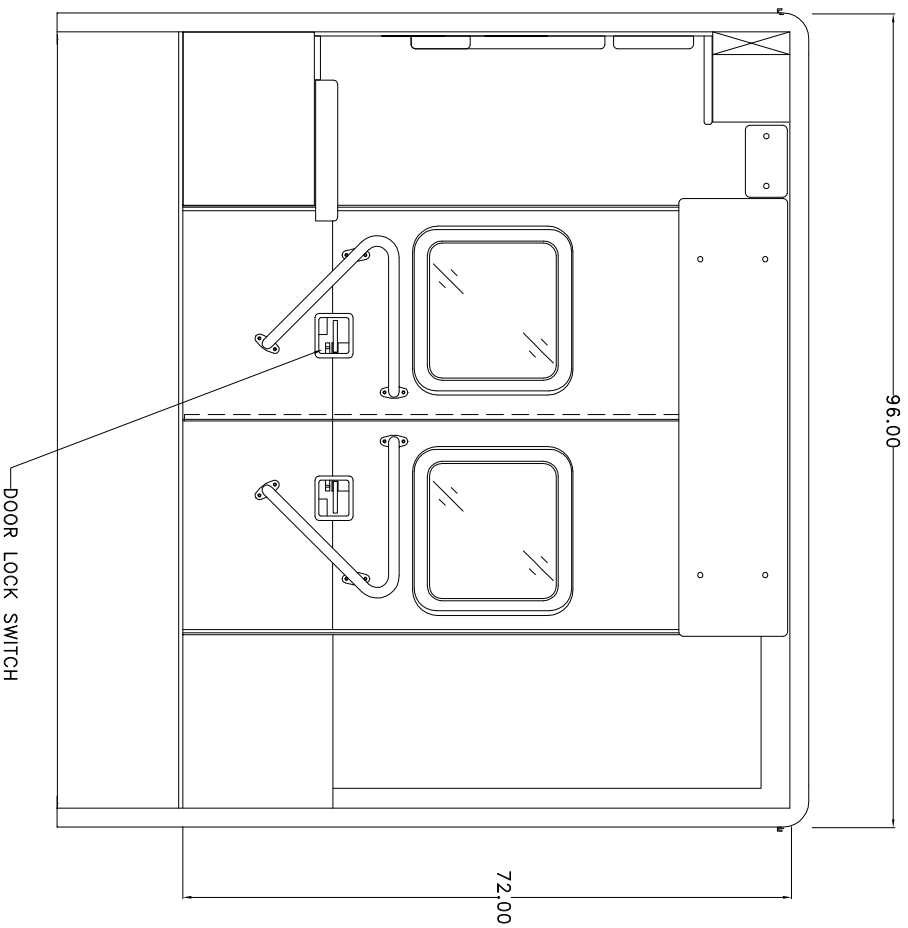
SPECIFICATION DRAWING

VEHICLE PRODUCTION NUMBER XXXXXX

REV
C

| REV | DESCRIPTION | DATE | APPROVED |
|----------|-------------|---------|----------|
| 453-3 EN | | 3/18/09 | |

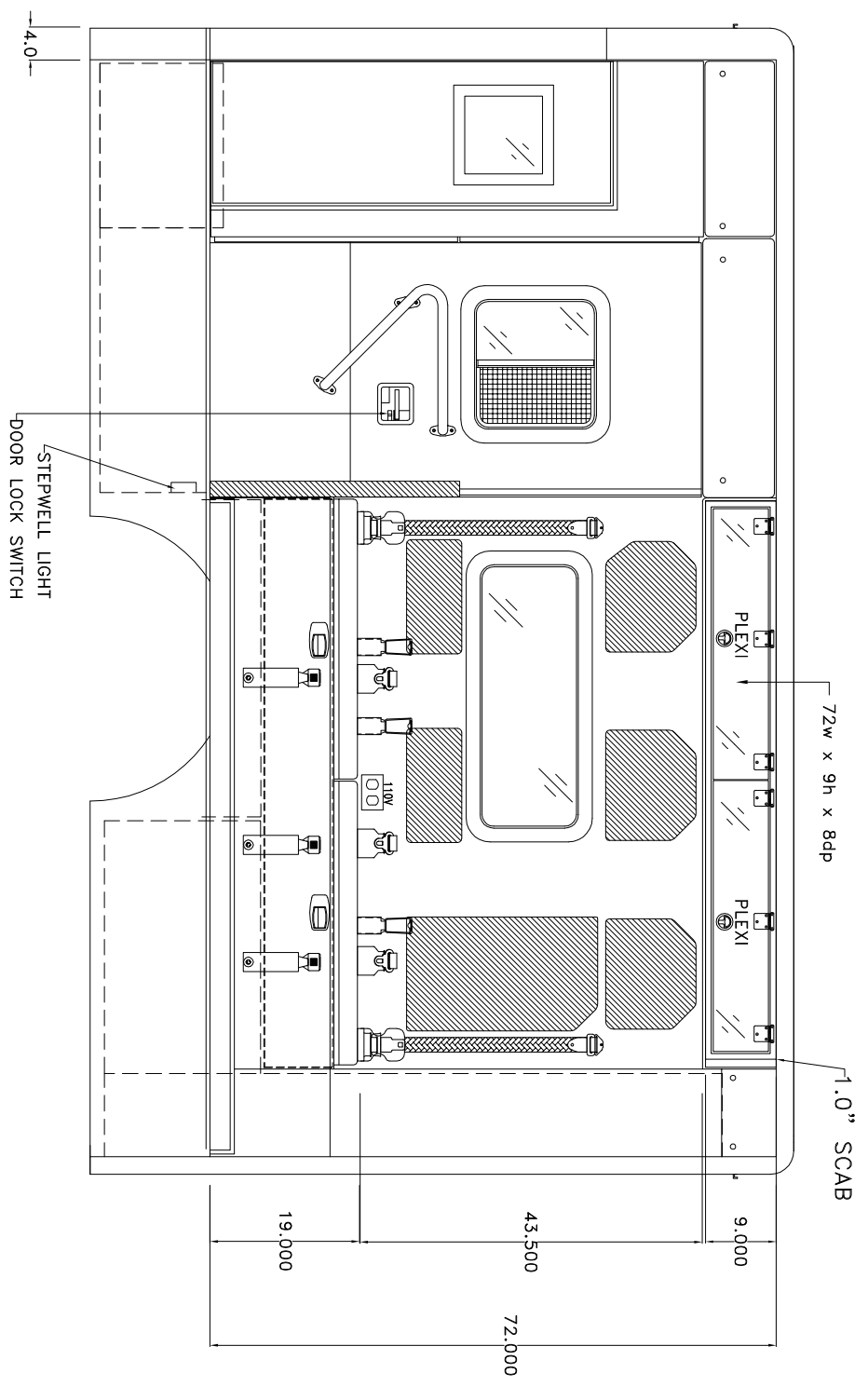
453-3 REAR WALL E-350 CHASSIS



SPECIFICATION DRAWING

| REVISIONS | | |
|-----------|-----------------|---------|
| REV | DESCRIPTION | DATE |
| 453-3 | SM WITH H.O.P.S | 3/19/09 |
| | | |
| | | |
| | | |

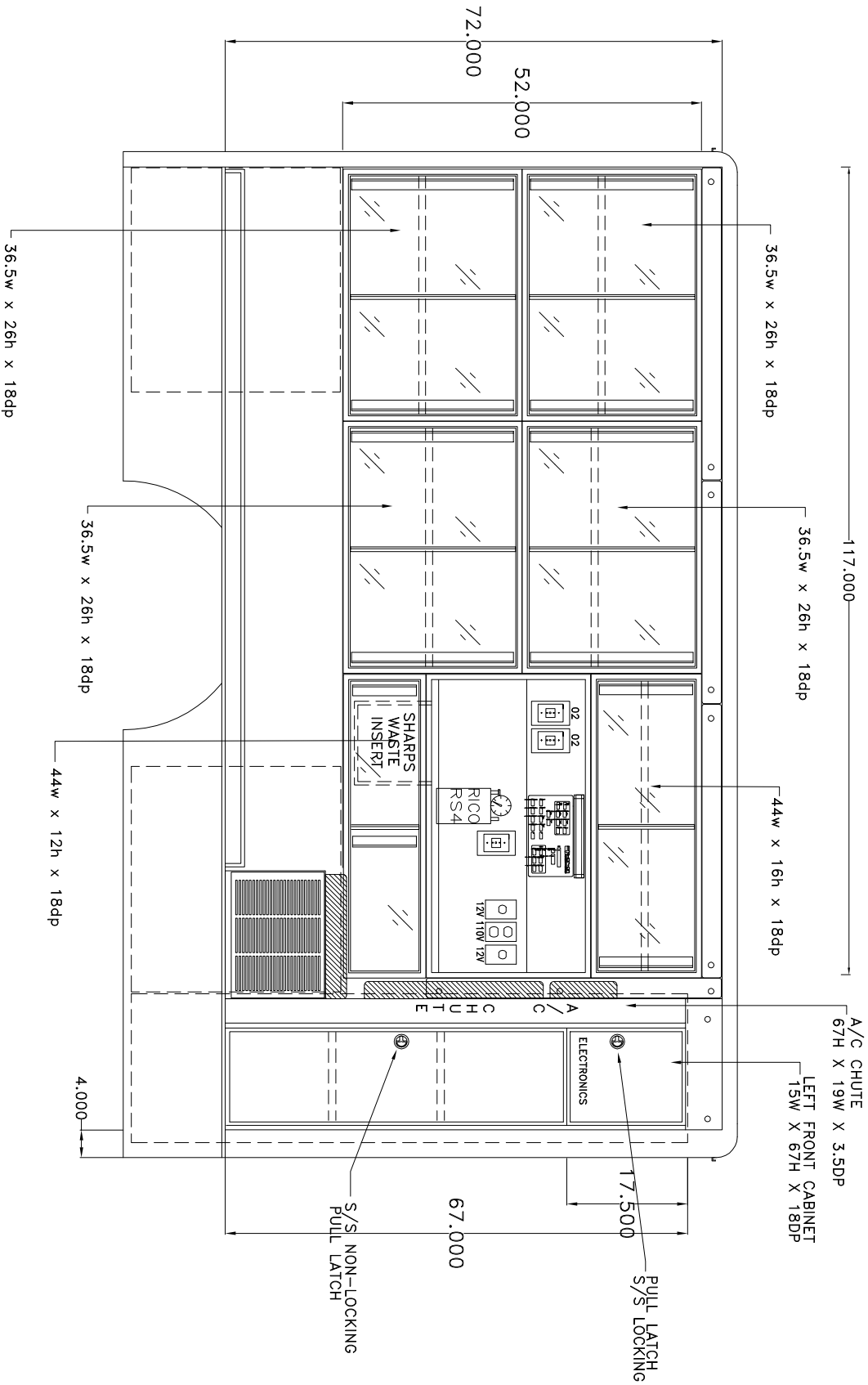
453-3 SIDE WALL
 E-350 CHASSIS
 H.O.P.S INSTALLED



VEHICLE PRODUCTION NUMBER XXXXX

| REV | DESCRIPTION | DATE | APPROVED |
|-----|-------------|---------|----------|
| C | 453-3 5M | 3/15/09 | |

453-3 CABINET WALL "A"
E-350 CHASSIS



SPECIFICATION DRAWING