

VEHICLE PRODUCTION NUMBER

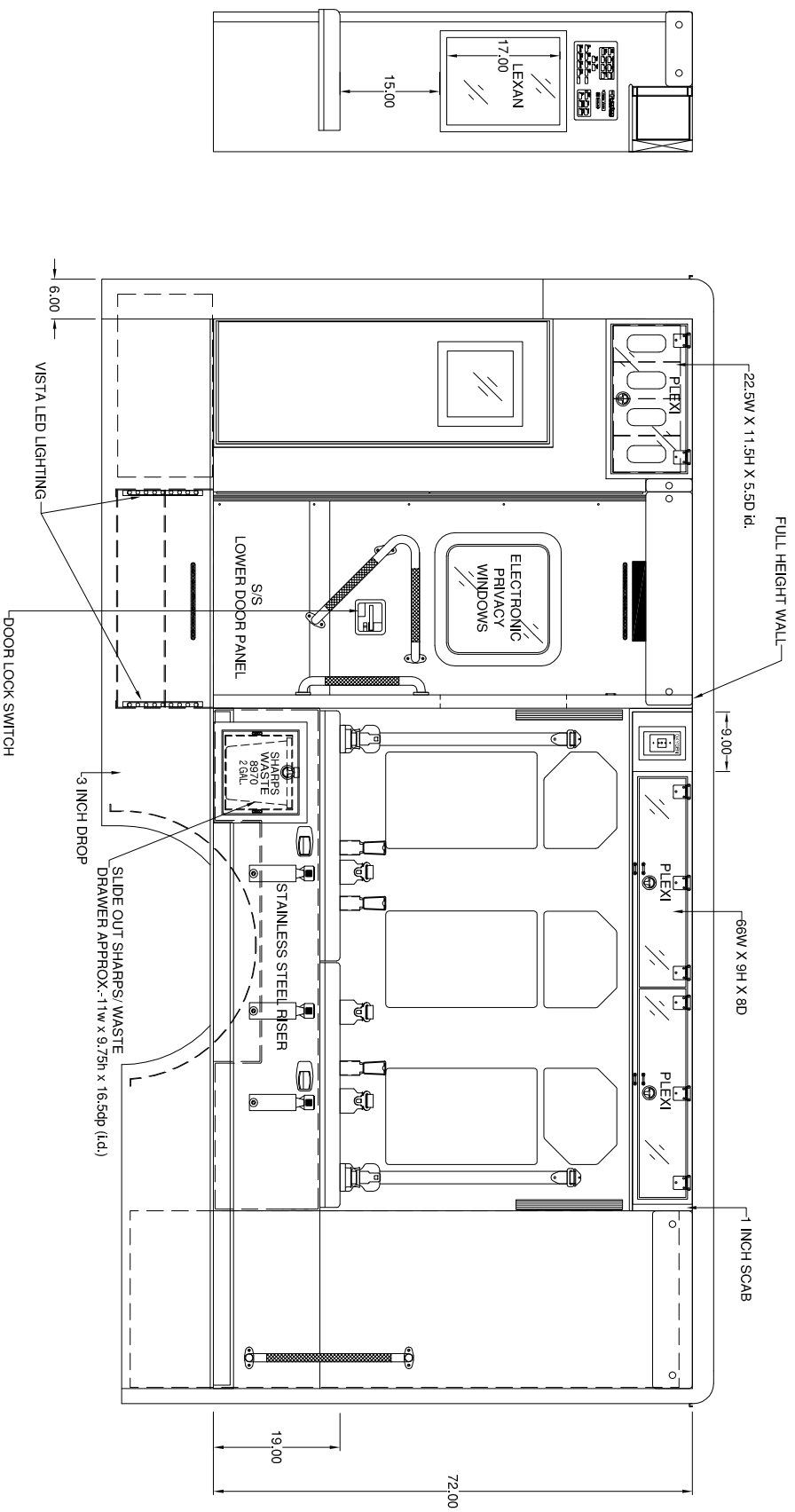
15086

REVISIONS		
REV	DESCRIPTION	DATE
A	553C SIDE WALL	10/22/09

DRAWN BY: RSH

553C SIDE WALL E-SERIES CHASSIS

BENCH WALL CABINET HAS LED LIGHTING AND INVENTORY CONTROL TABS



SPECIFICATION DRAWING

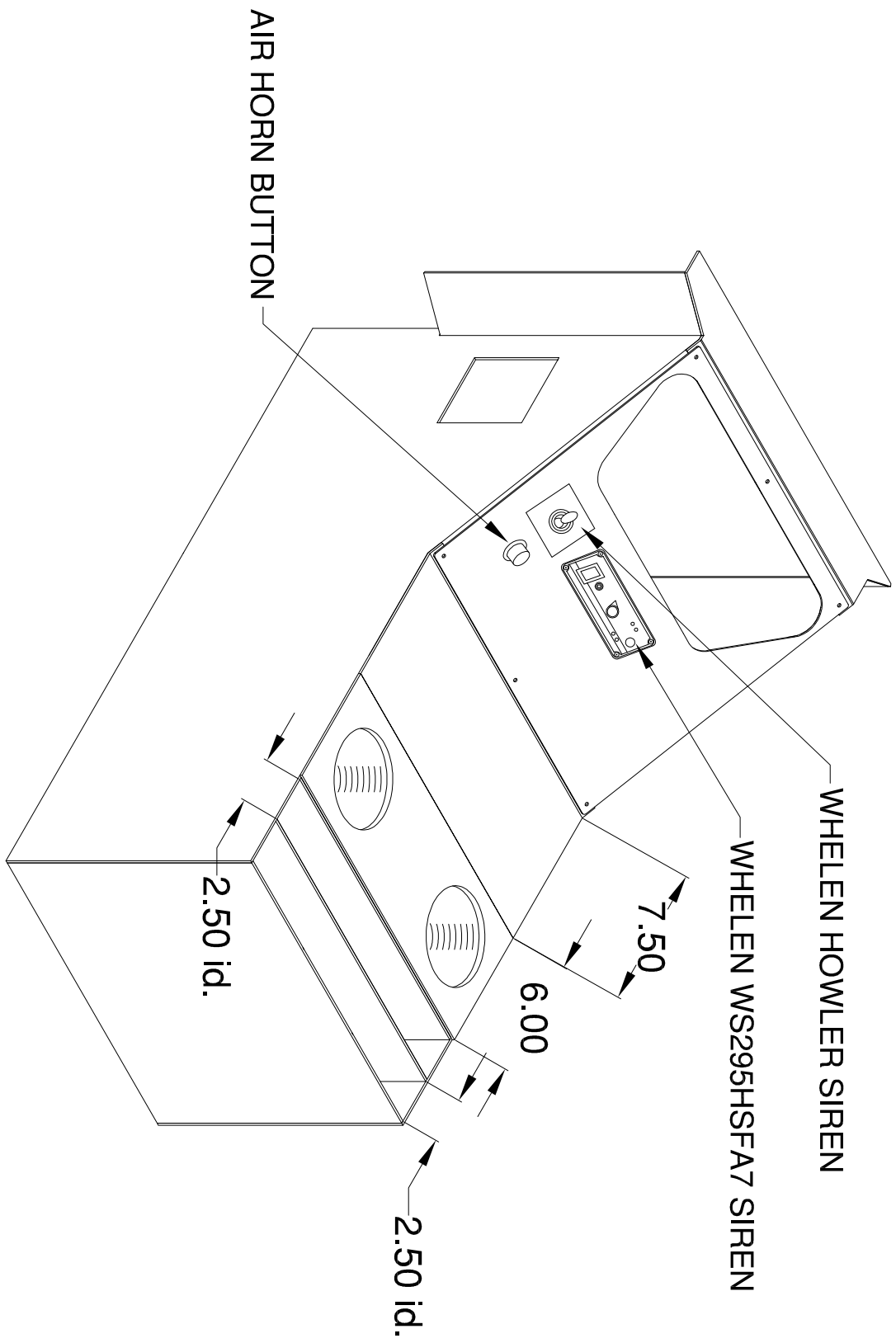
VEHICLE PRODUCTION NUMBER

15086

REVISIONS		DATE
REV	DESCRIPTION	DATE
A	XXXXXXXXXXXXXXXXXXXX	XXXXXX

DRAWN BY: RSH

FORD TYPE 3 VCI CONSOLE



SPECIFICATION DRAWING

VEHICLE PRODUCTION NUMBER

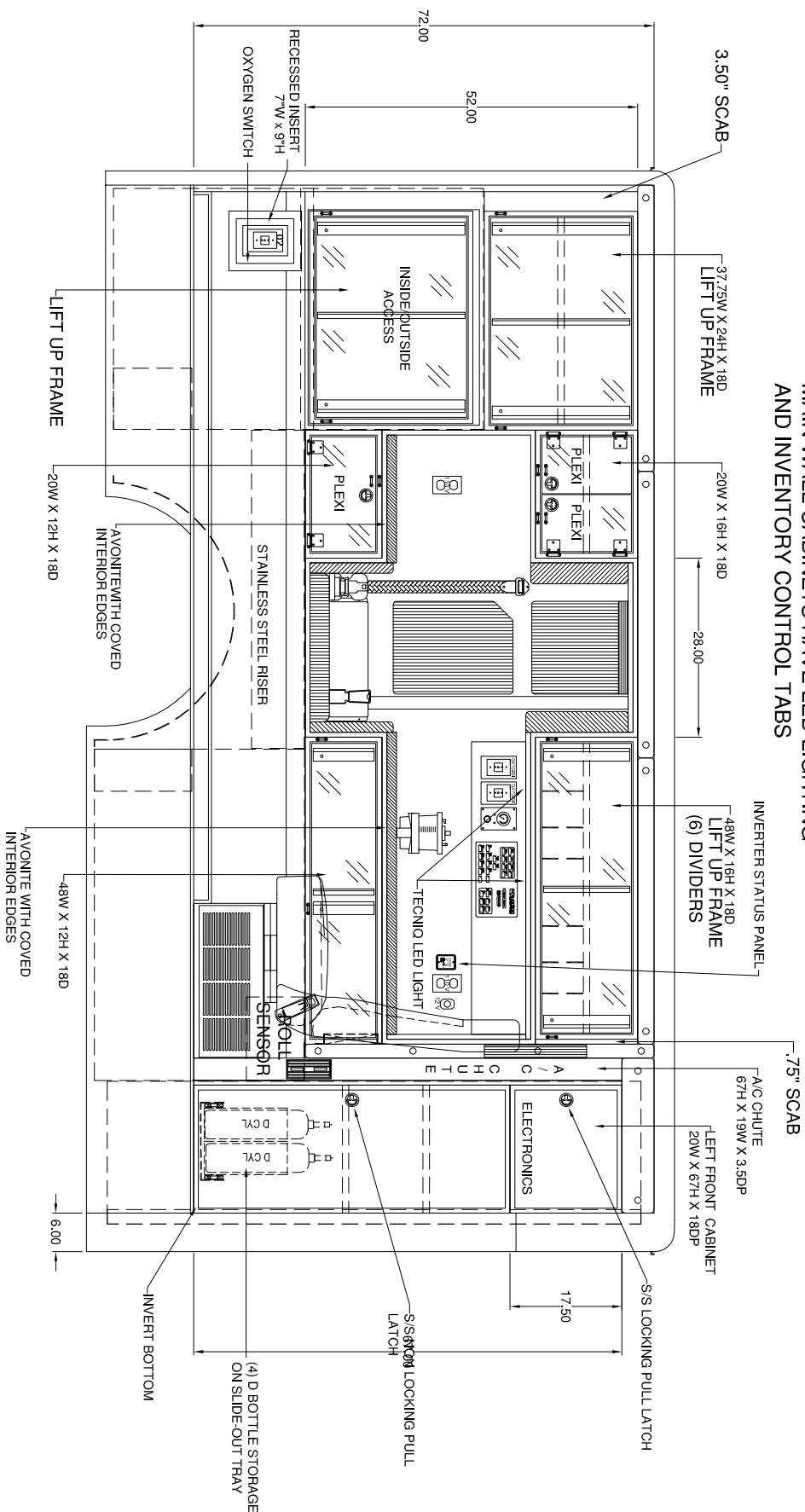
15086

REVISIONS		
REV	DESCRIPTION	DATE
A	553C CABINET WALL B	10/22/09

DRAWN BY: RSH

553C CABINET WALL B E-SERIES CHASSIS

MAIN WALL CABINETS HAVE LED LIGHTING AND INVENTORY CONTROL TABS

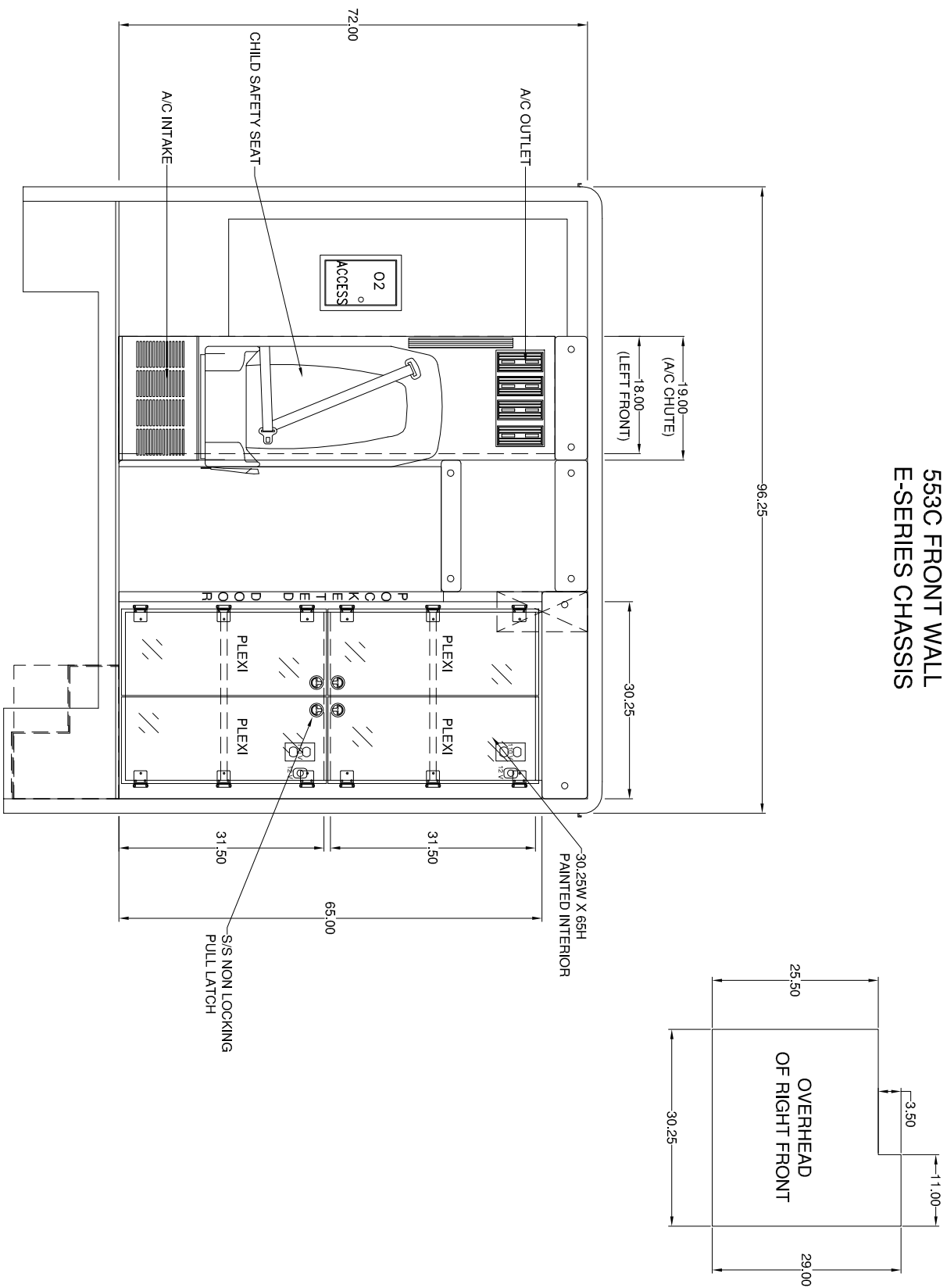


SPECIFICATION DRAWING

REVISIONS		
REV	DESCRIPTION	DATE
A	553C FRONT WALL	10/22/09

DRAWN BY: RSH

553C FRONT WALL E-SERIES CHASSIS



SPECIFICATION DRAWING

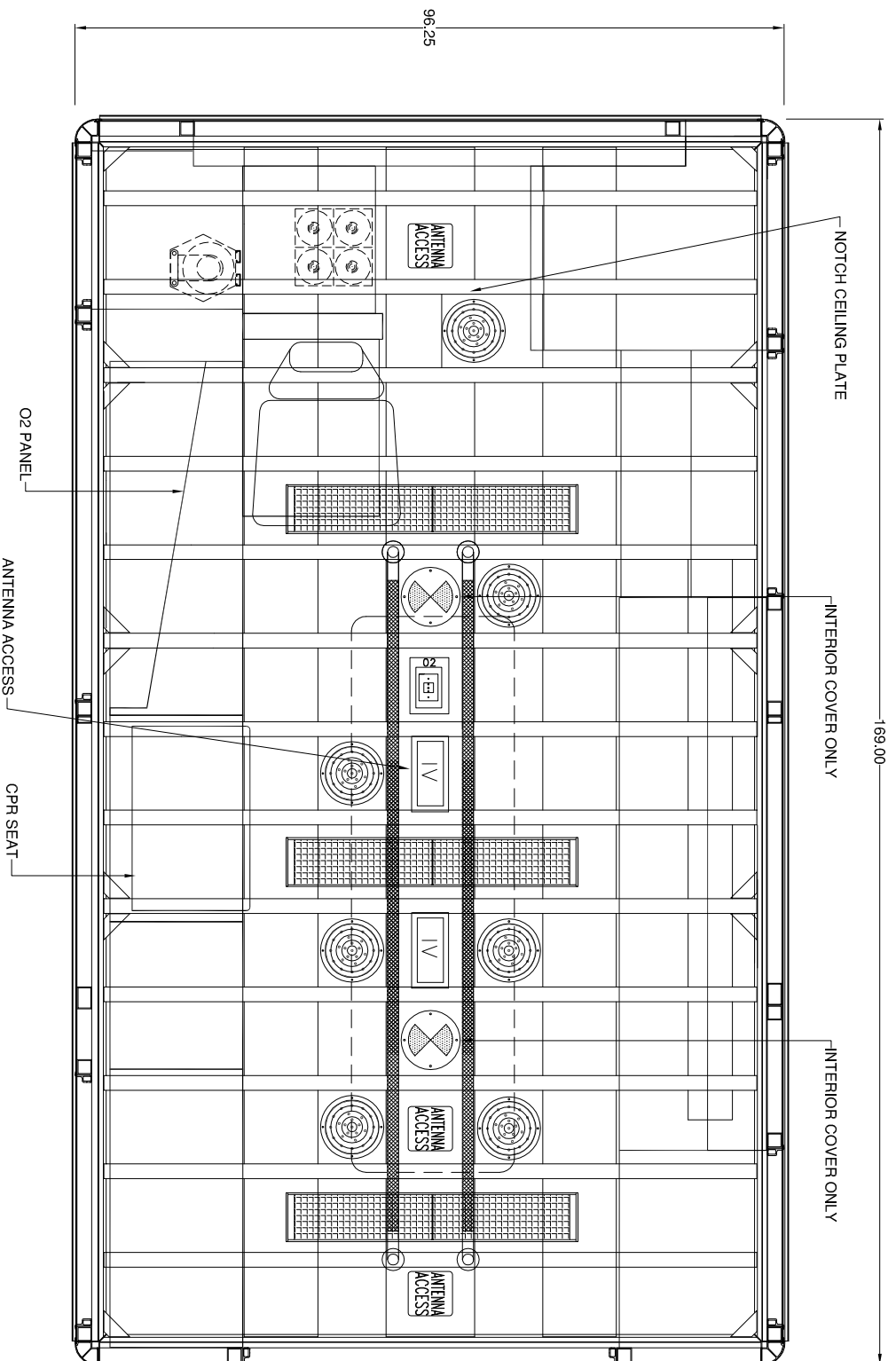
VEHICLE PRODUCTION NUMBER

15086

REVISIONS		
REV	DESCRIPTION	DATE
A	553C OVERHEAD B	10/22/09
DRAWN BY: RSH		

553C OVERHEAD "B" WITH CPR SEAT
E-SERIES CHASSIS

FRONT



SPECIFICATION DRAWING

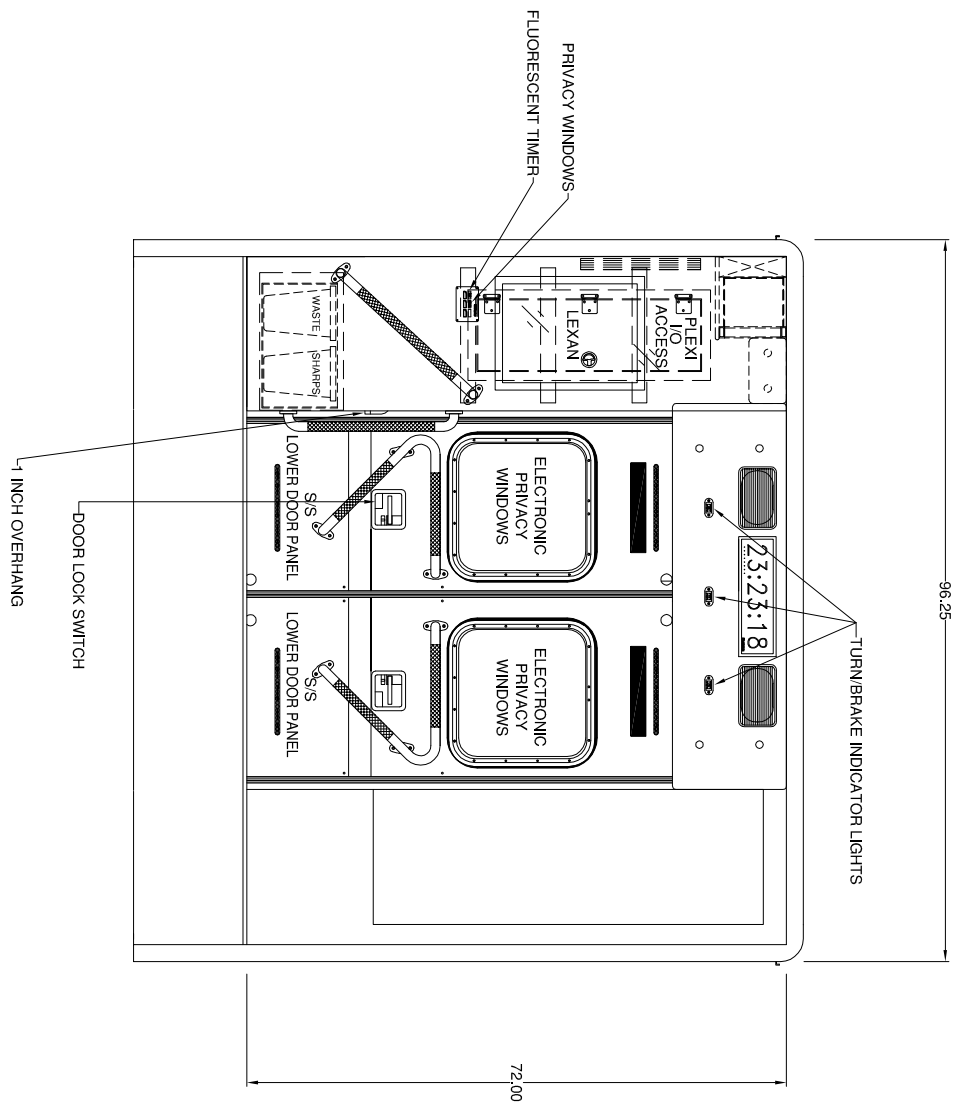
VEHICLE PRODUCTION NUMBER

15086

REVISIONS		
REV	DESCRIPTION	DATE
A	553C REAR WALL	10/22/09

DRAWN BY: RSH

553C REAR WALL
E-SERIES CHASSIS



SPECIFICATION DRAWING